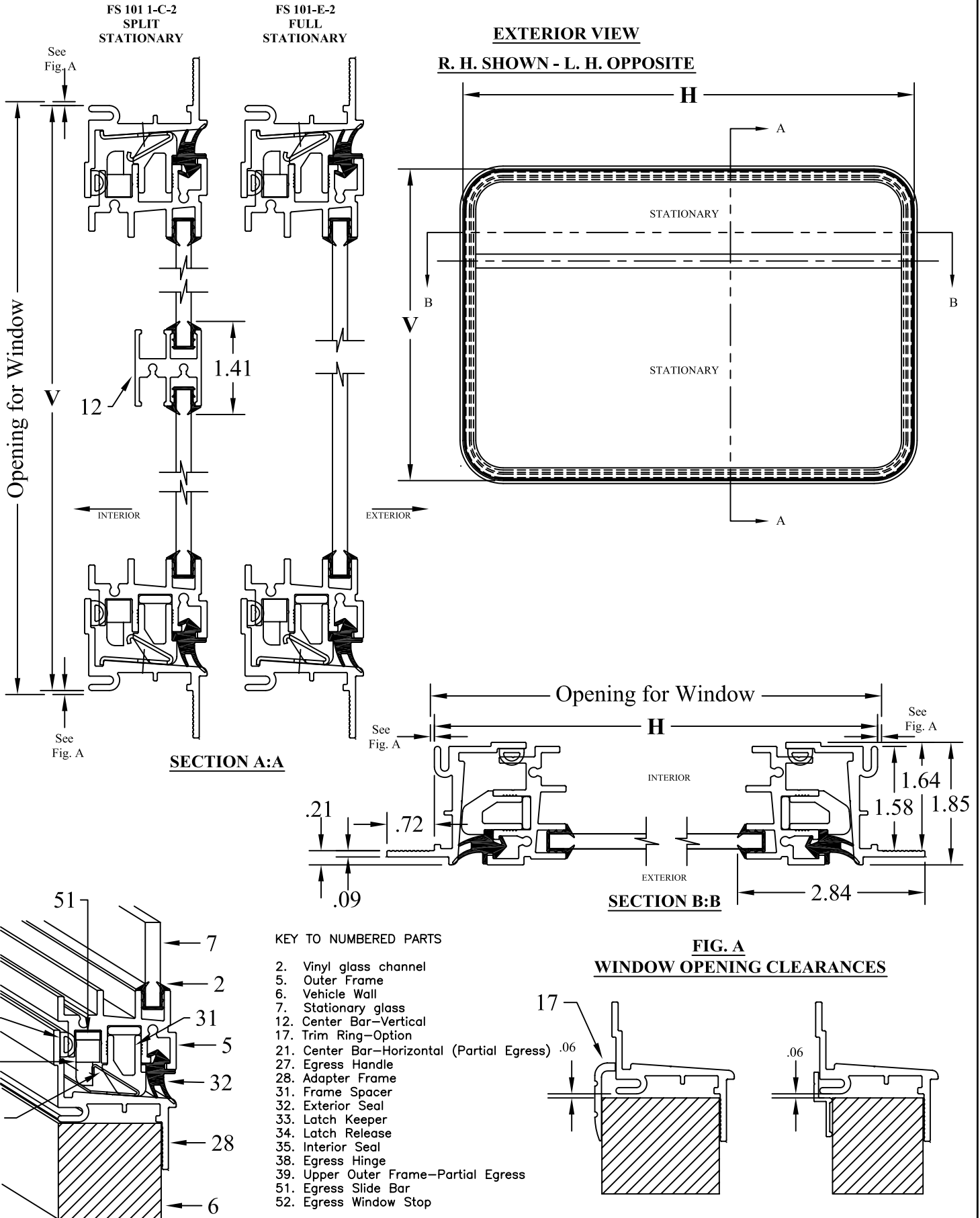


# CLAMP RING-MOUNT FRAMED GLASS

STATIONARY

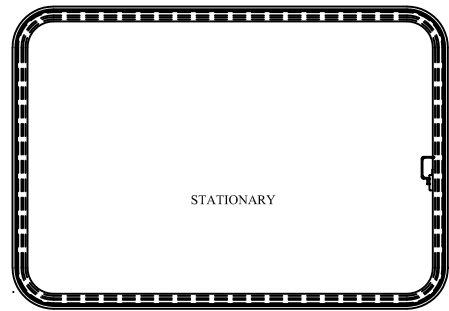
**FS-101 C  
& FS-101 E**



Stationary Glass Window- Fixed glass is mounted inside an aluminum frame. This window is available with a divider bar (FS-101 C) or as a full stationary single pane window (FS-101 E). The divider bar is normally only used for partial egress windows or for aesthetic purposes when purchasing the window in conjunction with FS-101 A or T windows, where the divider bar matches the level of the center bar of the T-Slider or Transom Tip In windows. This window can be manufactured in various sizes and is available with a Non-Egress, Full Egress, or Partial Egress configuration.

**EXTERIOR VIEW**

**R. H. SHOWN - L. H. OPPOSITE**



**FS-101E-2E**

**ORDERING INFORMATION**

**GLAZING:** 7/32" Blue-Gray Tint Laminated Safety Glass (Std) Tested to meet the requirements of FMVSS 205 & FMVSS 217

Optional tints of 7/32" Laminated Glass- Clear, Lt. Green or Med. Gray Tint\*

**Optional Glazing:** (FS-101 Windows manufactured with glazings listed below have not been tested for FMVSS 217 and may not be utilized in any instance where FMVSS 217 is a required standard)

- 3/16" Tempered Glass Light Green or Medium Gray Tint\*
- 1/4" Tempered Glass- Clear, Light Green or Med Gray Tint\*
- 3/16" or 1/4" Polycarbonate or Acrylic in various tints
- \*Additional Tints available upon request

**FRAME FINISH:** Black Anodized (STD)

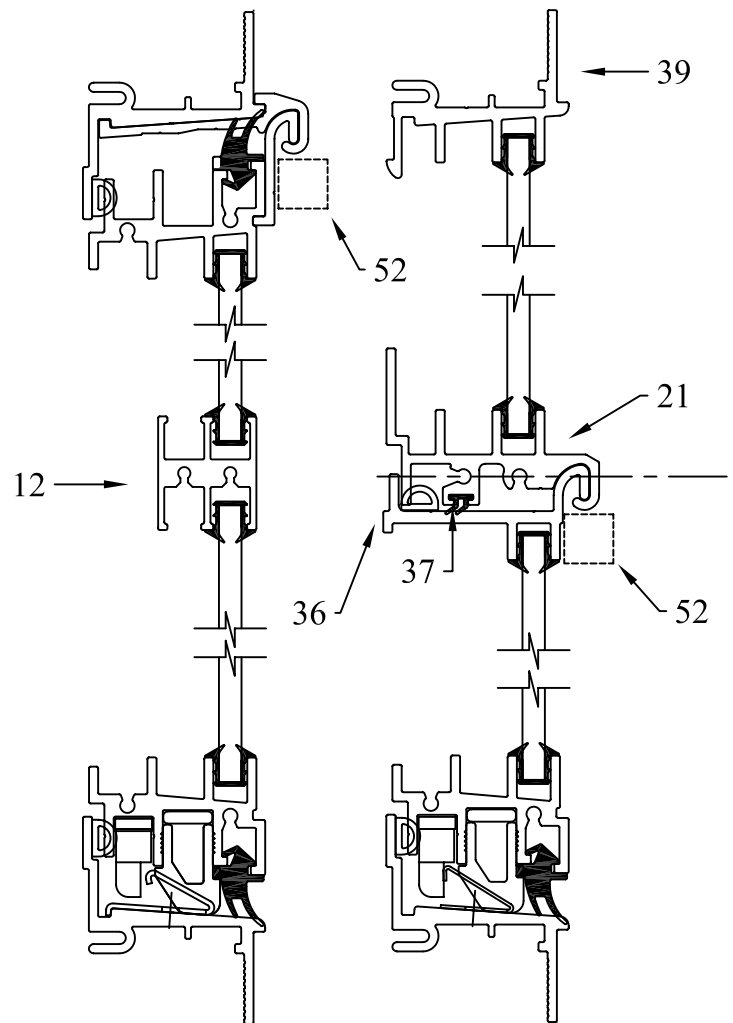
**CORNER RADIUS:** 4.75" (STD)

**LATCH:** None

**OTHER OPTIONS:** Window may be manufactured as a Non-Egress, Full Egress, or Partial Egress window.

**FS-101 C-2E**

**FS-101 C-2PE**



**SECTION A:A**