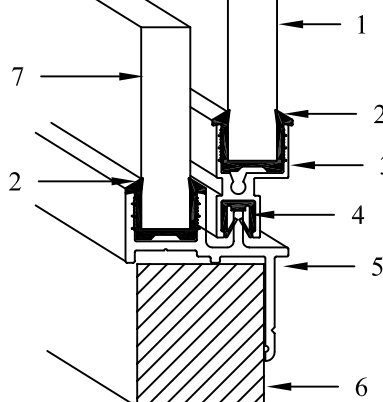
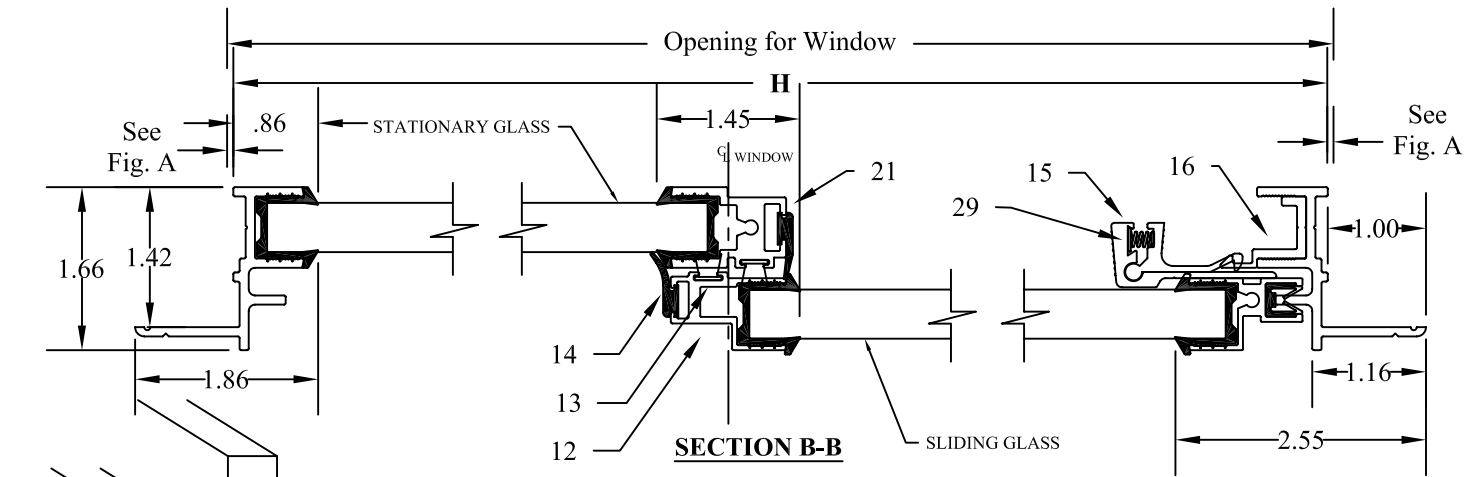
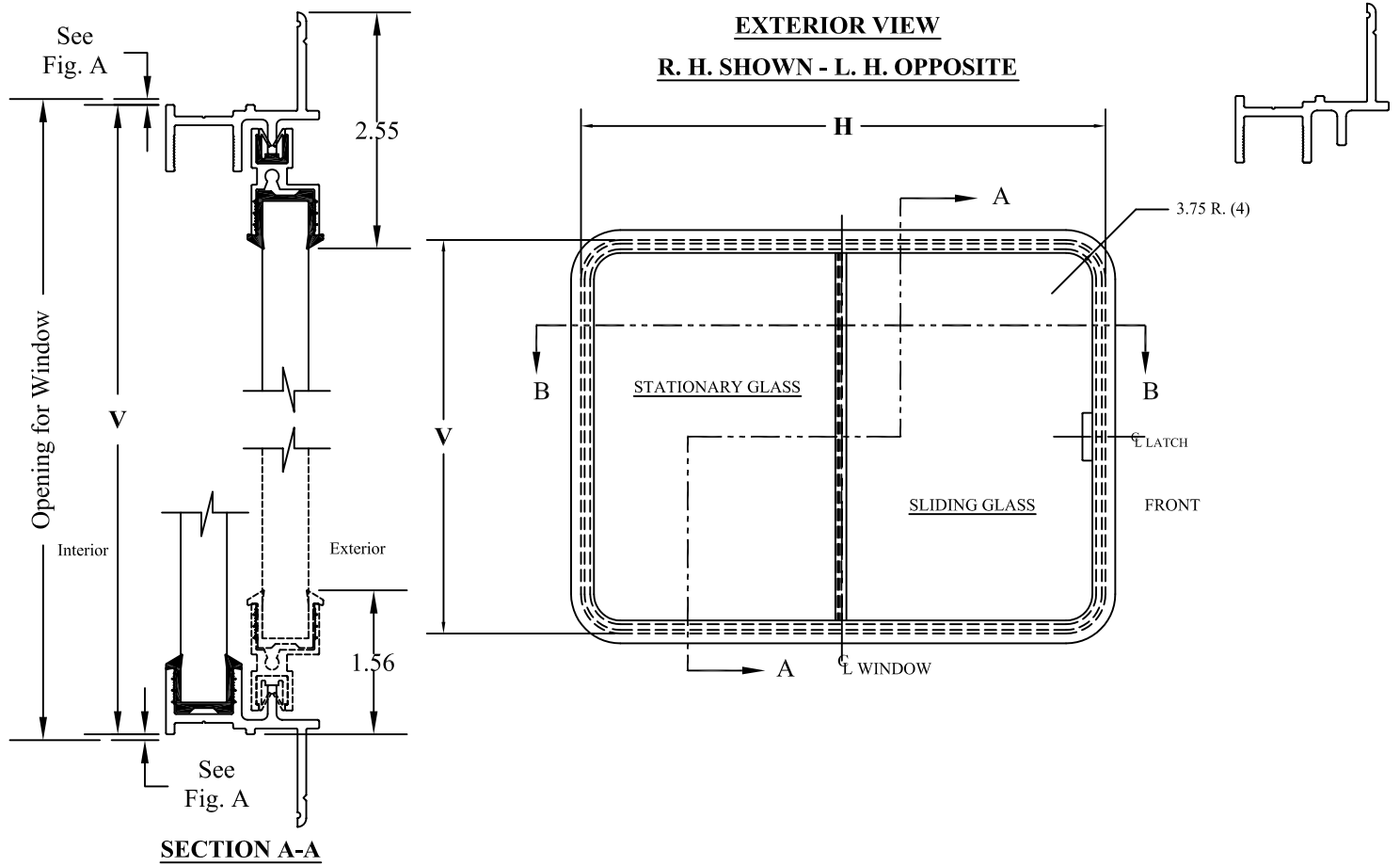


FLANGE-MOUNTED FRAMED GLASS

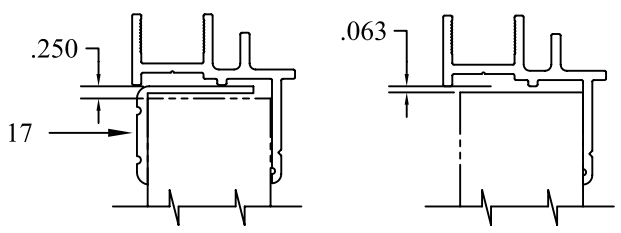
SINGLE
SLIDING WINDOW

FS-109



- KEY TO NUMBERED PARTS**
1. Sliding glass
 2. Vinyl glass channel
 3. Sliding glass frame-sash rail
 4. Felt slide channel
 5. Outer Frame
 6. Vehicle Wall
 7. Stationary glass
 12. Sash End Rail
 13. Felt pile Weather seal (2)
 14. Rubber Weather seal (2)
 15. WP2 Combination Latch & Handle
 16. Latch Keeper
 17. Trim Ring-Option
 21. Vertical End Rail
 29. Latch Spring

FIG. A
WINDOW OPENING CLEARANCES
Selection of optional interior trim ring requires additional allowance for window opening as shown.



Framed single sliding window designed to accept insulated glass or glazing 1/2" thick. Movable glass is mounted in a separate aluminum frame which slides within the outer frame. Drain holes, where necessary, and weather seals keep wind and water outside. This window is manufactured in various shapes and sizes.

ORDERING INFORMATION

STANDARD GLAZING: 1/2" Insulated Clear Tempered Safety Glass, consisting of 1/8" Glass, 1/4" gap, and 1/8" Glass

Options:

Light Green or Medium Gray Tint*
Other 1/2" thick glazings available

FRAME FINISH: Clear Anodized (STD)

Option: Flex Black

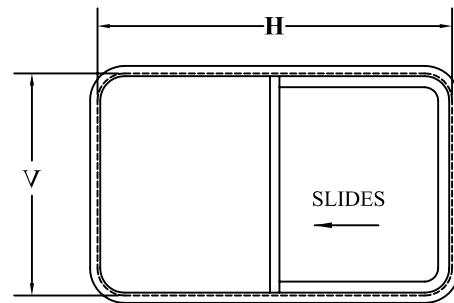
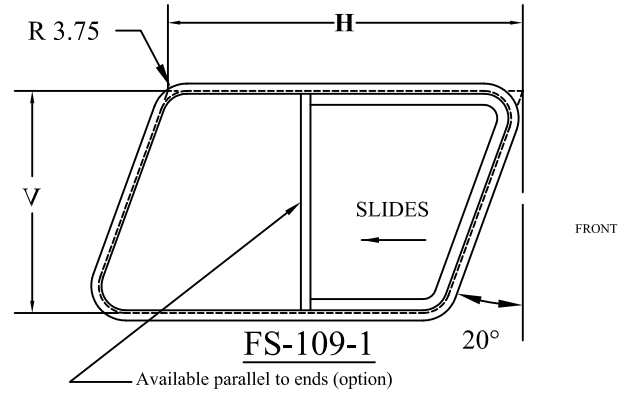
CORNER RADIUS: 3.75" (STD)

Options: 2.38"

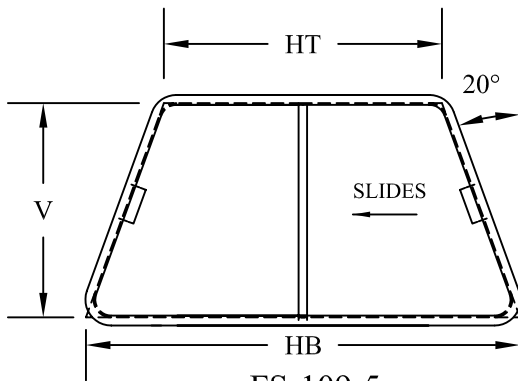
LATCH: WP-2 Squeeze Latch (STD)

EXTERIOR VIEW

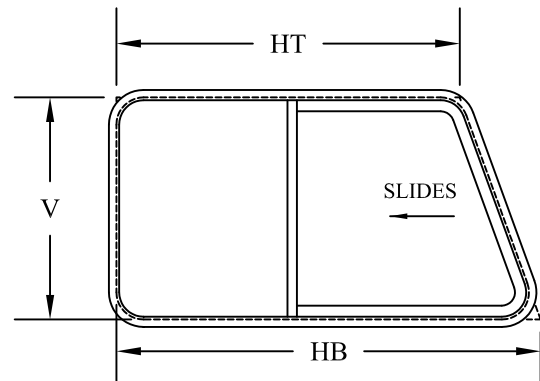
R. H. SHOWN - L. H. OPPOSITE



FS-109-2



FS-109-5



FS-109-4