

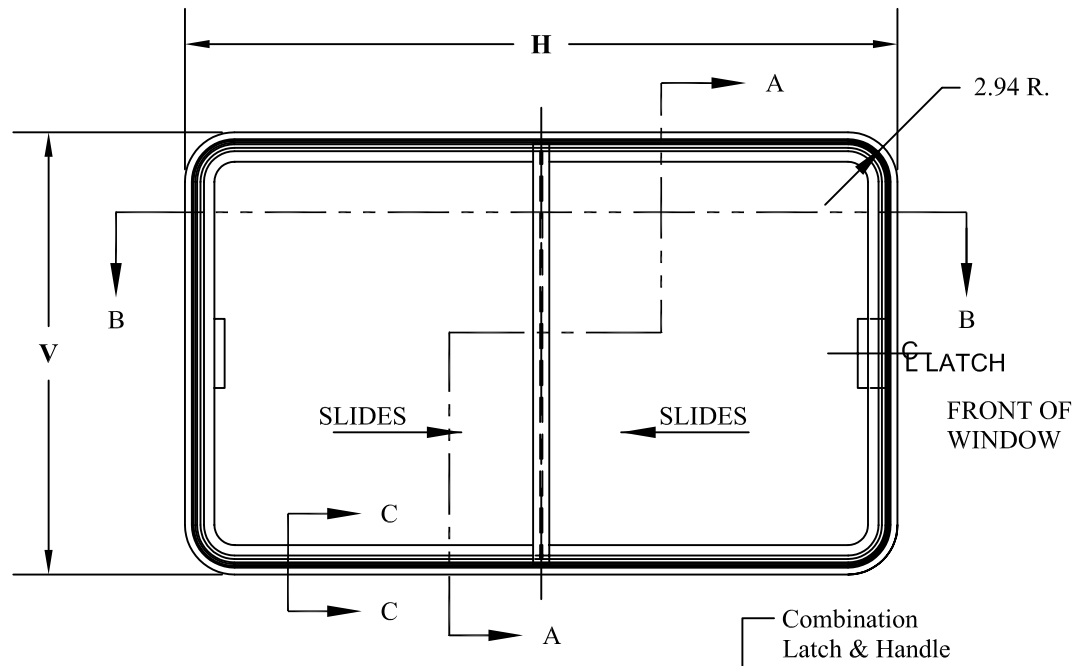
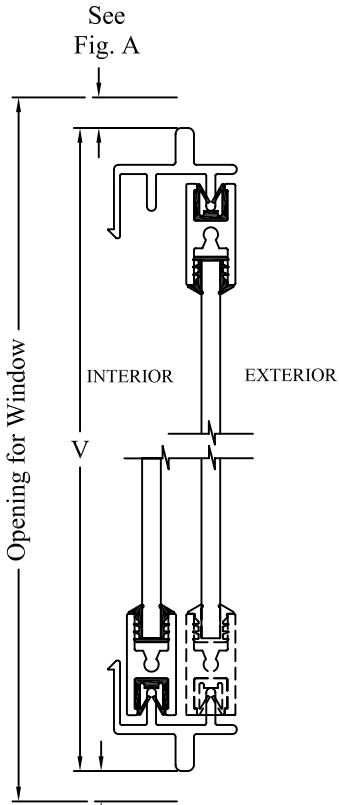
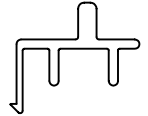
RUBBER-MOUNT FRAMED GLASS

DOUBLE
SLIDING WINDOW

FS-18

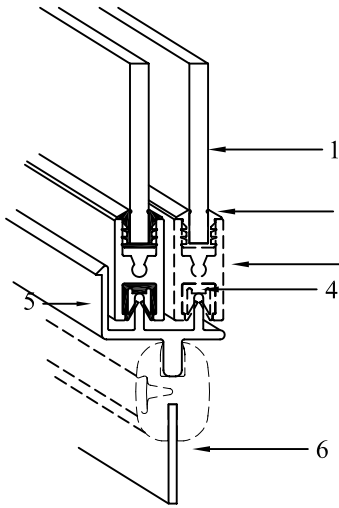
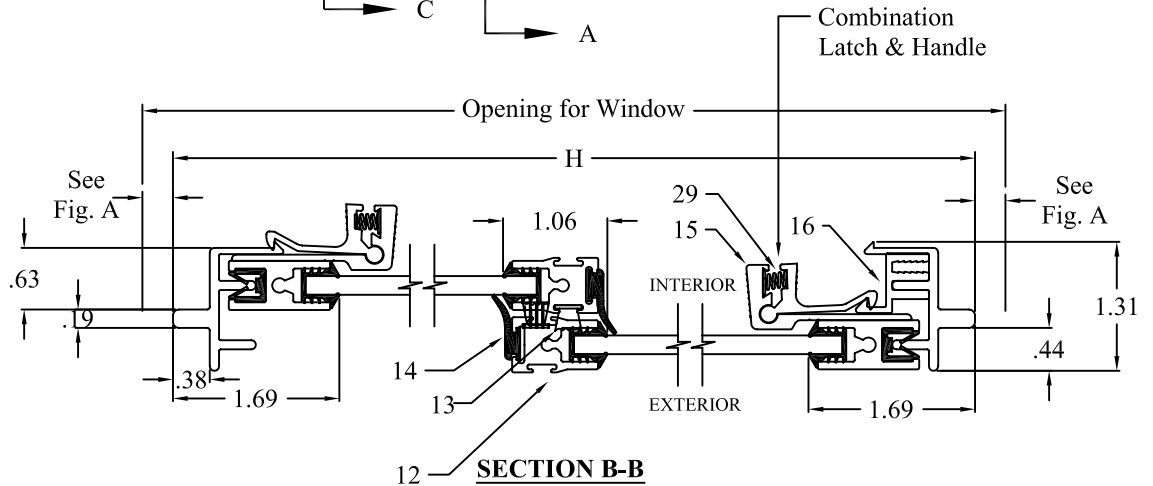
EXTERIOR VIEW

R. H. SHOWN - L. H. OPPOSITE



See Fig. A

SECTION A-A

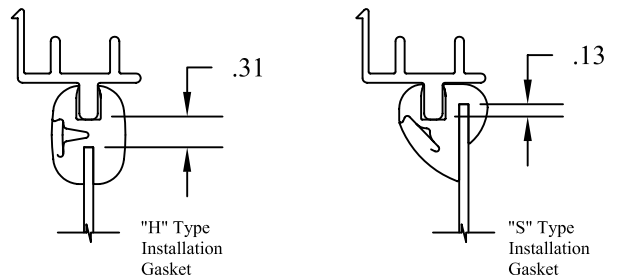


KEY TO NUMBERED PARTS

1. Sliding glass
2. Vinyl glass channel
3. Sliding glass frame-sash rail
4. Felt slide channel
5. Outer Frame
6. Vehicle Wall
8. Installation Gasket (H type)
12. Vertical Sash Rail
13. Felt Pile Weather Seal (2)
14. Rubber Weather Seal (2)
15. WP2 Combo Latch & Handle
16. Latch Keeper
29. Latch Spring

FIG. A

WINDOW OPENING CLEARANCES



Recommended clearance between window assembly and body opening. Clearances will vary from supplier to supplier. These types of installation gaskets, with clearances shown, can be supplied with windows upon request.

Movable glass is mounted in a separate aluminum frame that slides within the outer frame. Easy operating handles latch and unlatch the sliders in the same motion with which they are opened and closed. Drain slots, where necessary, and weather seals keep wind and water outside. This window can be manufactured in various shapes, sizes, and sliding configurations.

EXTERIOR VIEW

R. H. SHOWN - L. H. OPPOSITE

ORDERING INFORMATION

GLAZING: 3/16" Clear Tempered Safety Glass (Std)

Options:

- 3/16" Tempered Glass Light Green or Medium Gray Tint*
- 1/4" Tempered Glass- Clear, Light Green or Med Gray Tint*
- 7/32" Laminated Glass- Clear, Lt. Green or Med. Gray Tint*

3/16" or 1/4" Polycarbonate or Acrylic in various tints

*Additional Tints available upon request

FRAME FINISH: Clear Anodized (STD)

CORNER RADIUS: 2.94" (STD)

Options: 2.69"

LATCH: WP2 Squeeze Latch Assembly -2 (STD)

