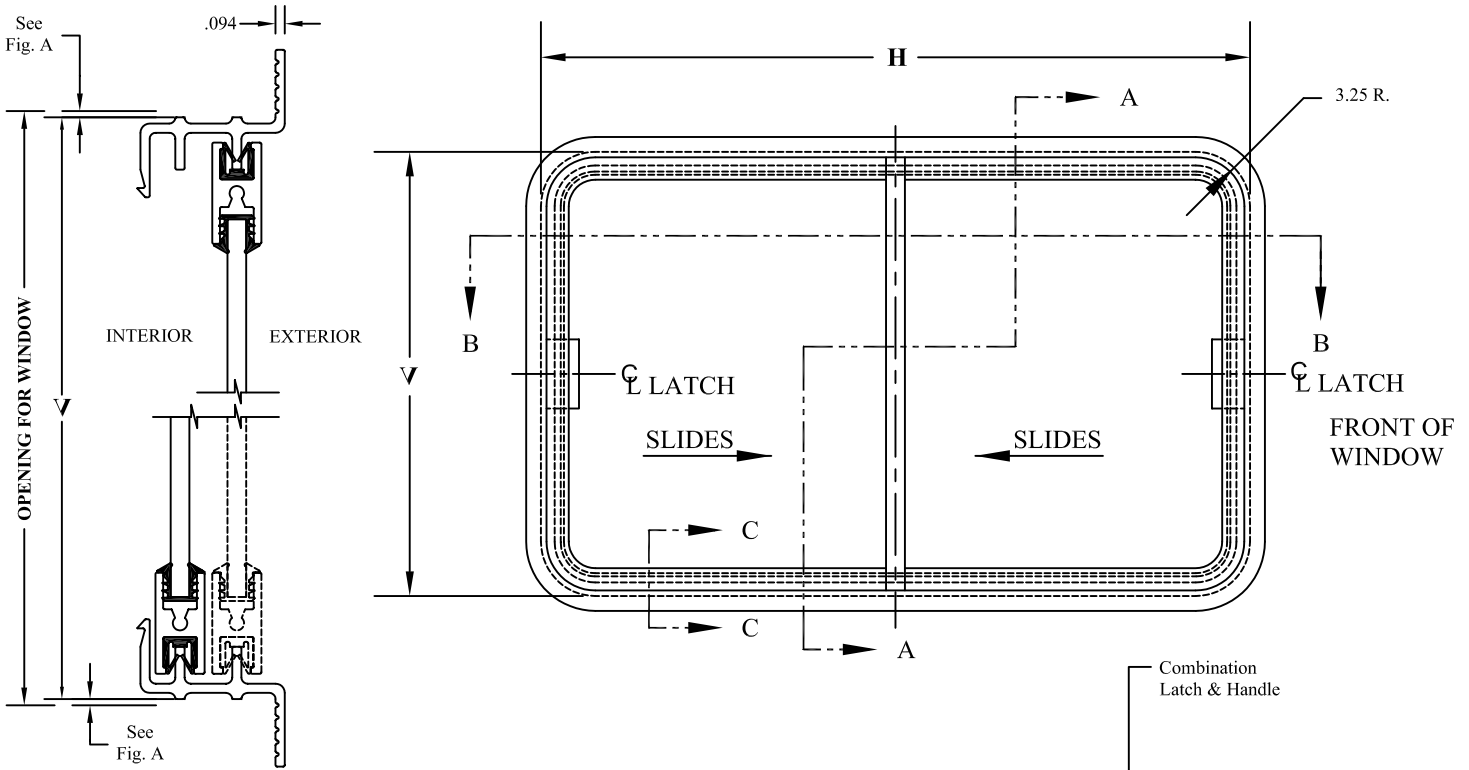


FLANGE-MOUNT FRAMED GLASS

DOUBLE
SLIDING WINDOW

FS-2

EXTERIOR VIEW
R. H. SHOWN - L. H. OPPOSITE



SECTION A-A

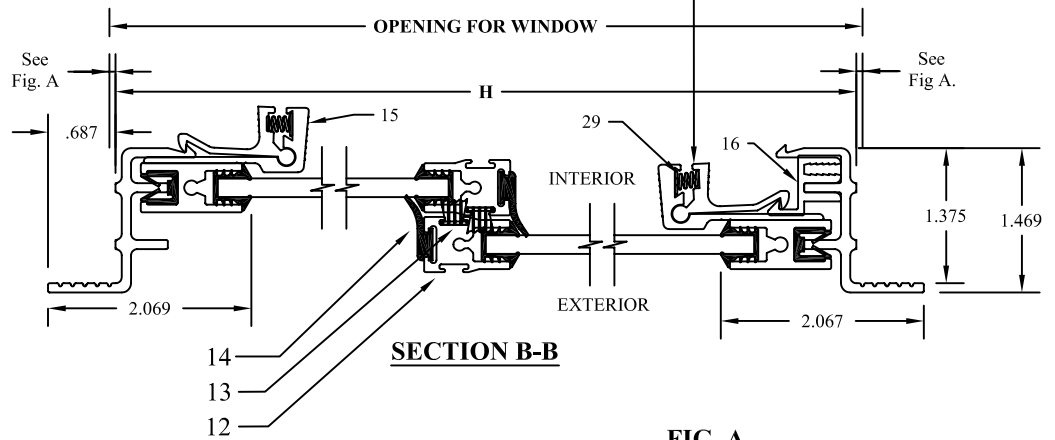
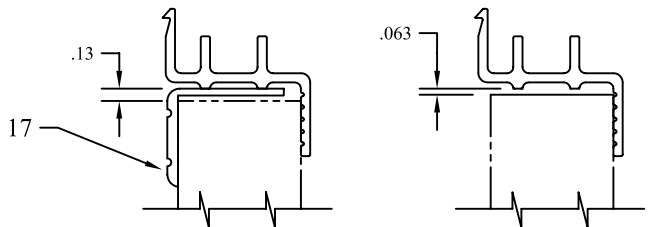
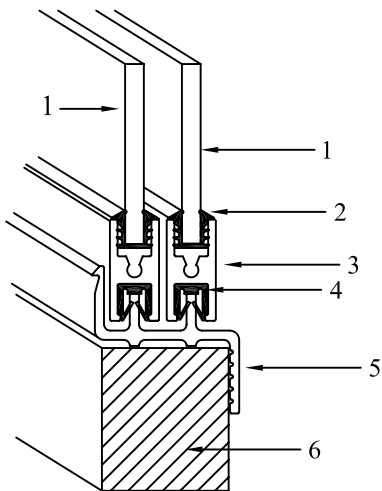


FIG. A
WINDOW OPENING CLEARANCES
Selection of optional interior trim ring requires additional allowance for window opening as shown.



KEY TO NUMBERED PARTS

1. Sliding glass
2. Vinyl glass channel
3. Sliding glass frame (sash rail)
4. Felt slide channel
5. Outer Frame
6. Vehicle Wall
12. Vertical Sash Rail
13. Felt pile Weather seal (2)
14. Vertical Rubber seal (2)
15. WP2 Combination Latch & Handle
16. Latch Keeper
17. Trim Ring-Option
29. Latch Spring



FS-2 WINDOW FEATURES

STANDARD SHAPES

Movable glass is mounted in a separate aluminum frame that slides within the outer frame. Easy operating handle latches and unlatches the slider pane in the same motion used to open and close the window. Drain slots, where necessary, and weather seals keep wind and water outside. This window can be manufactured in various shapes, sizes, and sliding configurations.

ORDERING INFORMATION

GLAZING: 3/16" Clear Tempered Safety Glass (Std)

Options:

- 3/16" Tempered Glass Light Green or Medium Gray Tint*
- 1/4" Tempered Glass- Clear, Light Green or Med Gray Tint*
- 7/32" Laminated Glass- Clear, Lt. Green or Med. Gray Tint*

3/16" or 1/4" Polycarbonate or Acrylic in various tints

*Additional Tints available upon request

FRAME FINISH: Clear Anodized (STD)

Option: Flex Black Paint

CORNER RADIUS: 3.25" (STD)

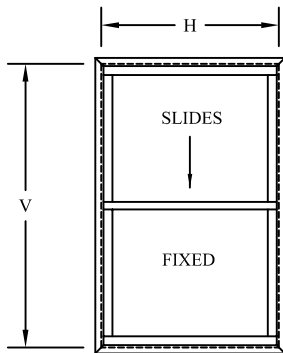
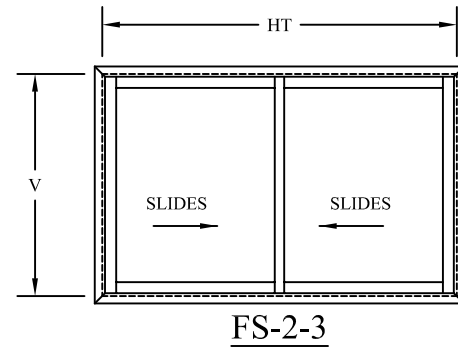
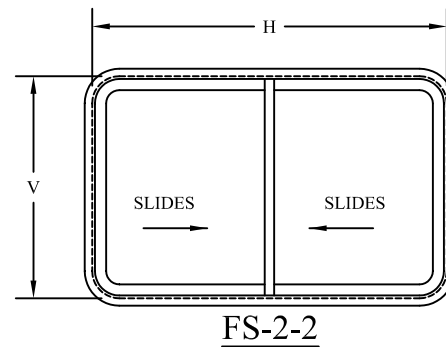
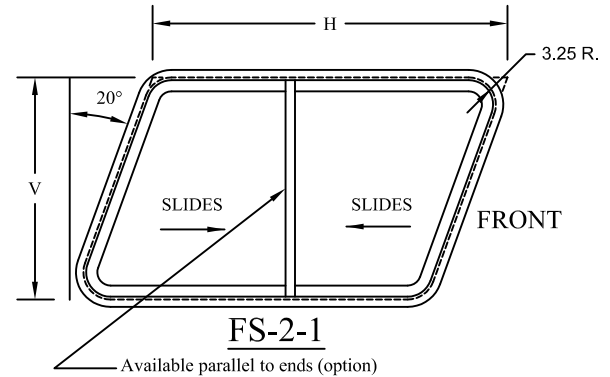
Options: Mitered Corners

LATCH: WP2 Squeeze Latch Assembly -2 (STD)

One Squeeze Latch on Vertical Slider

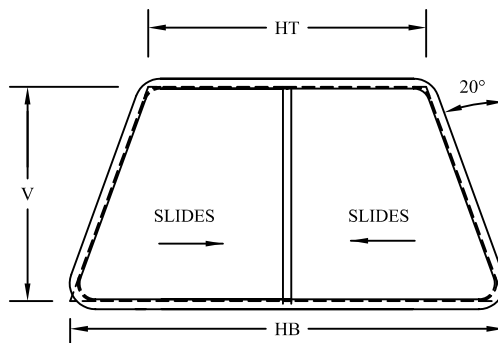
EXTERIOR VIEW

R. H. SHOWN - L. H. OPPOSITE

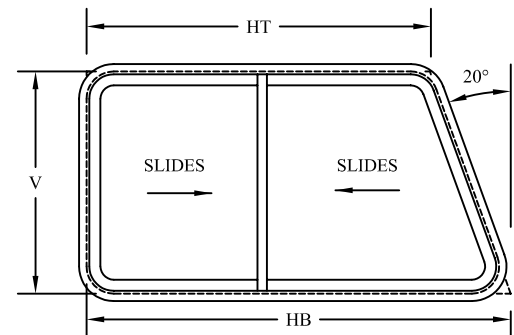


FS-2V-3

(Single Slide Only)



FS-2-5



FS-2-4

Transportation Products, Inc.
P. O. Box 586
Evergreen, Al 36401

Phone: (251) 578-1267
Fax: (251) 578-5213
E-mail: tpi@tpiwindows.com

FS-2