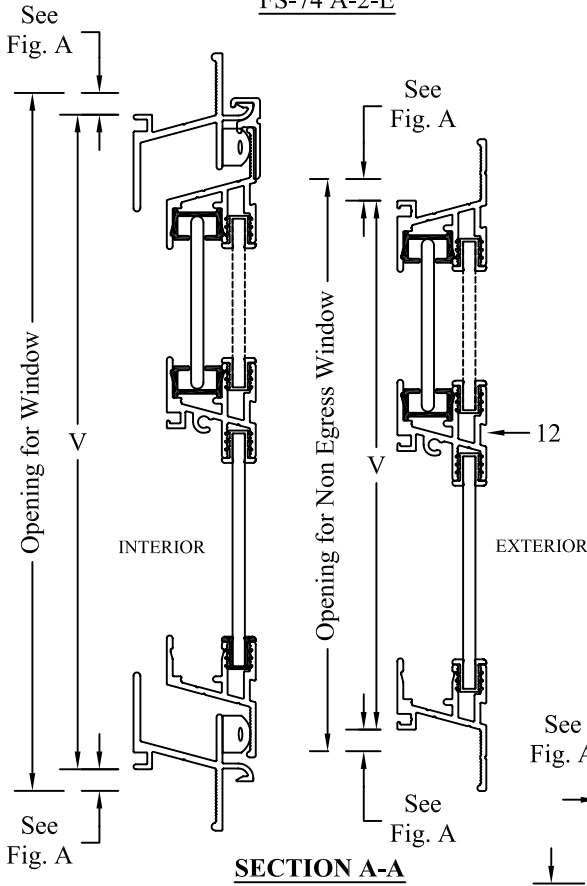


# CLAMP RING-MOUNT UNFRAMED GLASS

SINGLE SLIDING WINDOW

FS-74

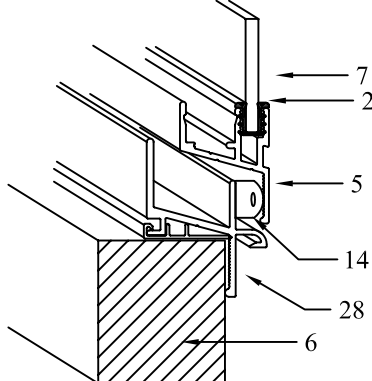
Top T-Slider Configuration  
FS-74 A-2-E



SECTION A-A

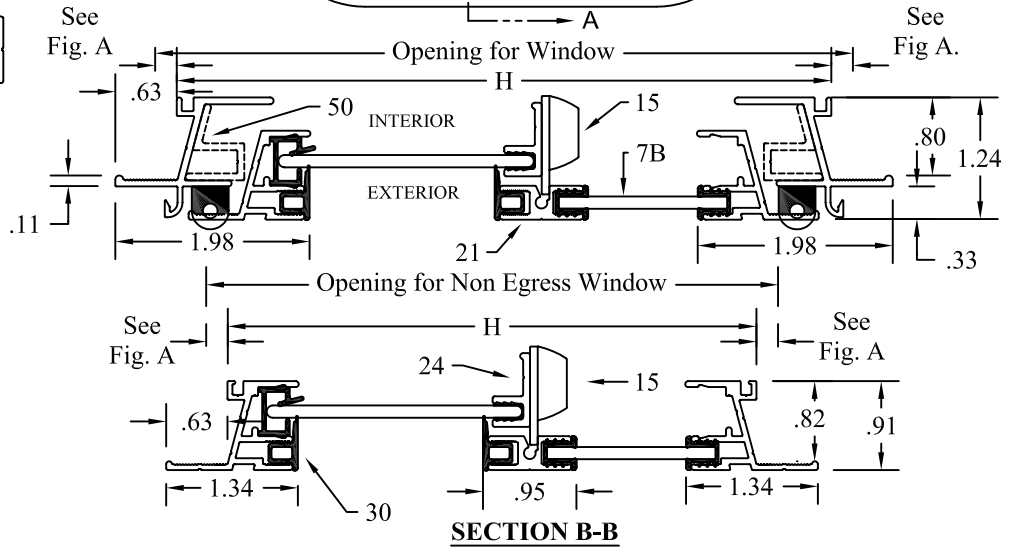
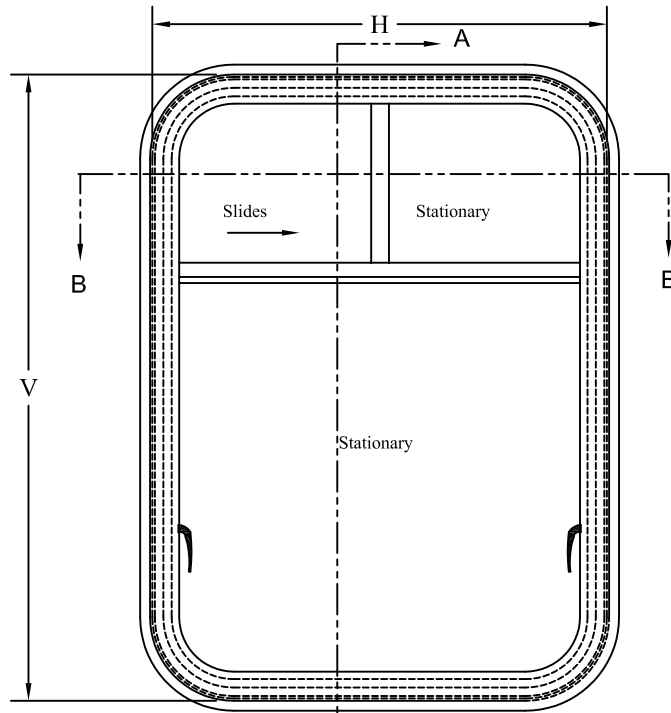
KEY TO NUMBERED PARTS

1. Sliding glass
2. Vinyl glass channel
4. PVC slide channel
5. Outer Frame
6. Vehicle Wall
7. Stationary glass
- 7B. Stationary glass
12. Horizontal End Rail, Fixed
14. Rubber Seal
15. Twist Latch
17. Trim Ring-Option
21. Vert. End Rail, Fixed
24. Latch Rail
27. Egress Handle
28. Adapter Frame
30. Fill Rubber Seal
43. Slide Bolt Latch
44. Center Bar- Vert Slider
45. Window Stop Channel
50. Egress Latch Keeper



EXTERIOR VIEW

R. H. SHOWN - L. H. OPPOSITE

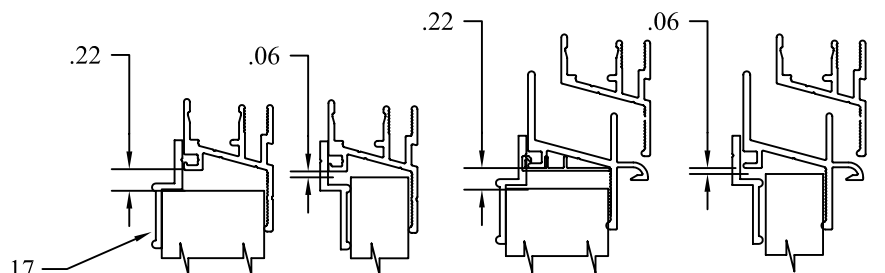


SECTION B-B

FIG. A

WINDOW OPENING CLEARANCES

Selection of optional interior trim ring requires additional allowance for window opening as shown.



Trim ring installed for walls greater than .82"

Trim ring installed for walls less than .82" thick

Trim ring installed for walls greater than .82"

Trim ring installed for walls less than .82" thick

Economical egress and versatile window design may be configured to fill numerous requirements. Clamp ring mounted adapter secures assembly to vehicle wall. Design allows a broad range of window types: Stationary, Top T-Slider, Single Slider or Vertical Raise Slider. This window may be configured with or without the egress feature.

EXTERIOR VIEW

R. H. SHOWN - L. H. OPPOSITE

**ORDERING INFORMATION**

**GLAZING:** 1/8" Clear Tempered Safety Glass (Std)

**Options:**

1/8" Tempered Glass Light Green, Medium Gray Tint, or 31% Graylite\*

1/8" Polycarbonate or Acrylic in various tints

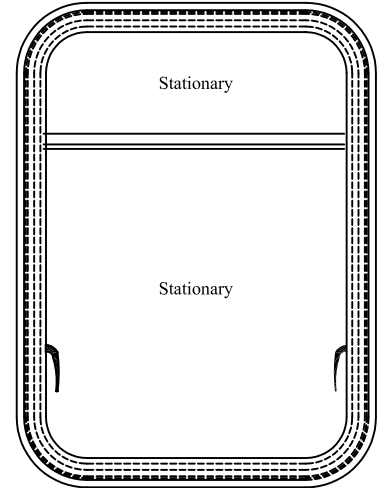
\*Additional Tints available upon request

**FRAME FINISH:** Flex Black Paint (STD)

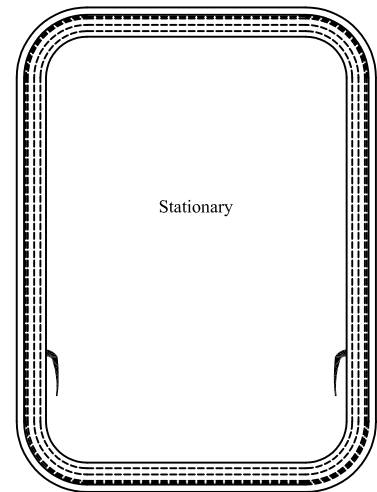
**CORNER RADIUS:** 4.00" (STD)

**LATCH:** Twist Latch (STD)

**Option:** Slide Bolt Latch (Vertical Slider Only)



FS-74 C-2-E



FS-74 E-2-E

Vertical Raise Configuration  
FS-74 V-2-E

